



# Cowichan Valley Rhododendron Society

Newsletter

Volume 33:9 November 2022

## Message from the President

### Horticultural Trick or Treating

The ancient Celtic Festival of Samhain marked the divide between the end of the harvest and the onset of winter, the increasing darkness a metaphor for death, and the veil between the two worlds at its thinnest and subject to breach. Fires were lit to ward off the spirits' intent on returning to their earthly home and turnips carved into snarling and gruesome faces to frighten them off. In case this were not enough, people disguised themselves in strange clothing and masks to avoid encounters with other worldly beings.

Sounds like your average garden in the autumn to me.

The veil between life and death is indeed thinly stretched at this time, as we watch the perennials fade and fall in a sodden mess, knowing the buds are secure beneath the ground for next year's miraculous push towards the sun. If only we could make cleaning up the slimy mess part of children's Halloween extravaganza, telling them it is monster brains and daring them to put them in a bucket.

If dressing up in rain gear, and walking stiff legged about the garden, hats sliding down and obliterating vision at crucial intervals, and making swish-swish sounds with each fettered step doesn't scare off the evil spirits as well as the post man, I don't know what will.

Leaves turn the colour of blood before spiraling earthwards,  
Continued on Page 2

## CVRS November Meeting

Wednesday  
November 2, 2022  
7:30 pm

Colin Tomboline

*'Lilium for Rhododendron Lovers'*

Information - Page 3

Christmas Party	4/5
Letter from Editor	6
Fall into Gardening Notes	6
<i>Rhododendron blackii</i>	12
<i>Rhododendron 'Contina'</i>	13
November's Companion Plants	14
Christmas Cactus	17
Greig Rhododendron Species Garden Update	18
Nature's Beauty	20
Membership Renewal	22
Calendar of Events/ Useful Links	23

### Banner Photo:

*Callicarpa bodiniera* berries in  
brilliant purple profusion

## *President's Message Continued*

blocking gutters, staining concrete, and doing their level best to foul air intakes. There has long been debates in the professional large garden world as to the best way to deal with this arboreal bounty.

There is the “leave everything as nature intended” school which is admirable but runs into problems when the piled leaves prove to be a source for wind and animals to continually pull them into sidewalks and roadways.

There is the scorched earth policy which leaves a barren and empty expanse of soil. Although very tidy, it is more exposed to the elements and erosion from rain.

There are a few hybrid systems out there. Some large gardens run the collected leaves through a mulcher and then return them, partially broken down and looking like a very expensive and attractive mulch.

Some gardeners have no fixed policy on the matter and deal with it based on the “the notion was on me, so I cleaned them up.” (Or not, depending on the state and quality of the notion at the time, or indeed, if there was a notable sporting event on the television that weekend)

Leaves contain many valuable nutrients that are ultimately returned to the soil. Large heavy leaves such as those of our native Big Leaf Maple may be the epitome of a wet blanket as it were, but fallen leaves also provide protection to the soil and young plants from freezing. So, in the end it is about your individual site and preferences, the types of trees and sizes of leaves you have, and your tolerance for the sheer exuberance of it all.

One final note on leaves – those from fruit trees and roses should be raked up and not composted on site. They can carry disease which re-infects the trees and fruits.

See you on Wednesday,

*Barrie Agar*



Photo: Credit Valley Conservation

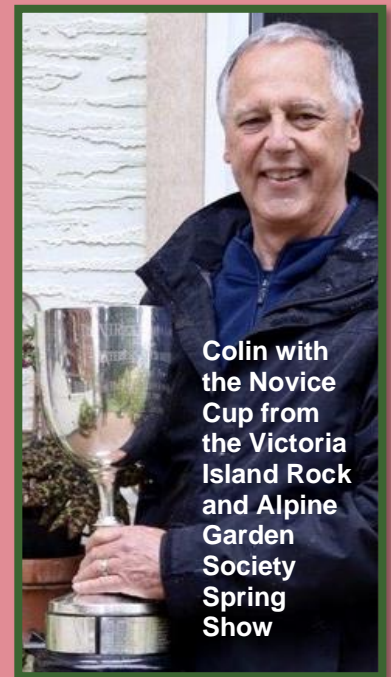


Guest Speaker:  
Wednesday, November 2<sup>nd</sup> 7:30pm

# Colin Tamboline

## *Lilium for Rhododendron Lovers*

Two great genera are better than one!



### Colin Tamboline has gardened for all of his adult life.

He was a family physician in Sidney B.C. from 1992 to 2022. He earned his PhD in Developmental Biology from the University of Victoria in 1990, and his MD from the University of British Columbia in 1991.

Now fully retired from practice, he is able to enjoy more time with family: his wife, three children and four grandchildren. Retirement also allows more time for gardening pursuits.

He has been obsessed with *Lilium* since about 1998, and when he became semi-retired in 1997, he spent more time hybridizing lilies. Colin has been a member of the Victoria Lily Society since 2002, and its President since 2019.

His love for Island native plants, irises, peonies, orchids, rhododendrons, and more recently, bog and alpine plants has led him to belong to a number of other local and international garden societies.

The family lives and gardens on a rocky one-acre property in North Saanich B.C. with many 120 foot second-growth Douglas Fir, Arbutus, Garry Oak, and *Erythronium oregonum* surrounding their lily, rhododendron and perennial beds.



Above: *Lilium martagon* 'Claude Shride'

Below: *Lilium speciosum* 'Uchida'



# CVRS CHRISTMAS PARTY

Wednesday, December 7, 2022  
7:30 pm

## ST JOHN'S ANGLICAN CHURCH HALL

486 Jubilee Street, Duncan, BC

The venue for the Christmas Party was chosen to allow generous distancing between friends while still enjoying an indoor gathering.

### DINNER:

- Potluck (Favourite dish to share)
- Warming oven available

### DRINKS:

- Provided by CVRS Executive

### What to Bring:

- Food to share and Items for the food hamper
- Your own plates and cutlery
- Gift for the gift exchange
- Tall Tales and Photos (If you wish)
- 4 quarters to vote for favourite photos

### Christmas Hamper Donations

In the Spirit of the Season, we will be collecting items for a Christmas Food Hamper. As in most Christmas Food Hamper Drives, money donations are also greatly appreciated to build well-balanced hampers of food most needed for those less fortunate.

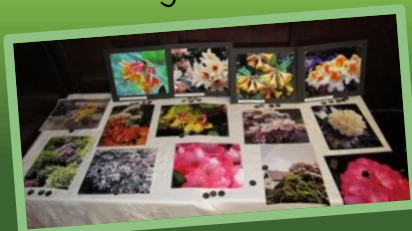
### ACTIVITIES:

#### Tall Tales Contest:

- Write a Tale
- Your tale must include the following  
*Rhododendron Names: Mary's Favourite,  
Tally-Ho, Blue Shine Girl, Purple Lace,  
Cherry Brandy*

#### Photo Contest:

- Subject Rhododendrons
- Maximum 3; 8x10 photos, matted or not
- Four quarters for voting



### GIFT EXCHANGE

- Please bring an unwrapped gift
- suggested maximum cost \$20

### RSVP:

Numbers are needed for Planning Purposes  
Please contact: **Mary Pike**

[tyrrell.me@gmail.com](mailto:tyrrell.me@gmail.com)

[cowichanvalleyrhododendron@gmail.com](mailto:cowichanvalleyrhododendron@gmail.com)

# CHRISTMAS PARTY DETAILS

## Some things stay the same:

### FOOD AND GOODIES:

Buffet-style Potluck Table

Bring your favourite Sweet or Savoury dish to share and delight!

Please bring your own plates and cutlery

### DRINKS PROVIDED:

Non-alcoholic punch, Wine, and Soda/ Fruit juice

### PHOTO CONTEST:

Bring your best three (3) Rhododendron photos

**Hint:** Photos look most competitive in 8 x 10 format

Prizes: 1st, 2nd and 3rd most popular photos

**Partygoers bring four (4) quarters to place in the bowls to vote for your favourite photos!**



### TALL TALE TELLING:

Back by extremely popular demand.

It is a well-known fact that Rhododendron lovers are the best storytellers in the Cowichan Valley

#### **There are very few rules to this contest:**

- Your story may be fact or fiction, indeed truth or veracity is discouraged
  - You will have 3 - 4 minutes (approximately) to spin your yarn
- Following are 5 words that must be used at least once in your tale:

**Mary's Favourite, Tally Ho, Blue shine Girl, Purple Lace, Cherry Brandy**

The **master storyteller** will be chosen by the most appropriate method (clapping-of-hands volume) and presented with a lovely prize. Start dreaming up your claim to fame.

### GIFT TABLE:

Everyone/couple is asked to bring an unwrapped gift for the Gift Exchange

### LOCAL FOOD BANK DONATIONS:

As usual, we will be collecting for those less privileged.

Cash is ideal as it goes further and is easier to handle.

### RSVP:

If you would kindly RSVP Mary Pike at

[tyrrell.me@gmail.com](mailto:tyrrell.me@gmail.com) or

[cowichanvalleyrhododendron@gmail.com](mailto:cowichanvalleyrhododendron@gmail.com) we will set a place at the table especially for you.

She may also help you arrange a ride.

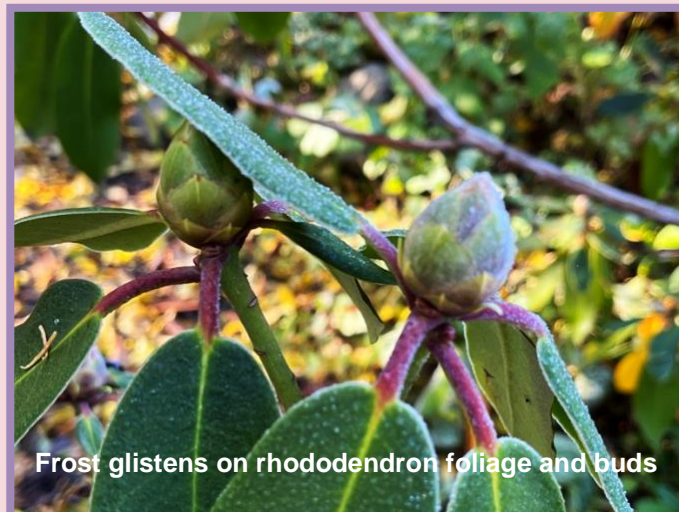
**We sincerely hope you are able to join us in the fun and festivities!**



# Letter from the Editor

Hi Friends,

This morning, I stepped out into a *drizzle* – an experience I have been longing for, for months! Oddly, I didn't prance out into the rejuvenating element as I had sworn I would when it finally happened. Instead, much to our dogs' dismay, I realized it was suddenly important to do some research for a few hours and retreated to my computer desk with a wrap over my shoulders. I was disappointed with my reluctant response; but I told myself that I needed just one morning to acclimate, and then I would be ready to throw on my rain-jacket.



Frost glistens on rhododendron foliage and buds

When rain was finally in the forecast, I had made a long list tasks, including a long list of plants to be moved or planted just before the rains began. Unfortunately, I ran out of time, but worse, I definitely had forgotten about the cold – what was I thinking!

The gardens are grateful; the forests are grateful; the fish in the rivers are grateful; and we are grateful. I was particularly grateful when I listened to the informative speakers at the “Fall into Gardening” event held in Qualicum Beach this past Sunday. Knowledgeable speakers brought regional details to the larger notion of the impact of climate change. Later, I strolled through my garden with an altered perspective and with more appreciative and grateful eyes. In this newsletter, and the next, I will attempt to share key notes brought forward by these speakers.

Also, The Greig Rhododendron Species Garden Advisory Committee met at Milner Gardens this week as plans for Phase Two are being developed. This valuable venture may be something that the CVRS members would be willing to support. Read about the many ways we could do so.

Several weeks ago, I received an inquiry about Vireyas – whether anyone on the Island propagated Vireyas and possible sources other than RSBG. The young man wished to try growing Vireyas in his greenhouse. I suggested that Glen Jamieson might have some, but also, that ordering from RSBG was now relatively straightforward using the Seawings Express as brokers. Growing rhododendrons with questionable hardiness has seemed a doubtful enterprise; however, with temperatures increasing, perhaps taking another look at them would be interesting. Find information about *Rhododendron blackii* in this issue.

Several trees and companion plants make their statements this month – some dramatically and others in humble style.

Enjoy reading,

Verna

# Fall into Gardening

## *‘Coping with Climate Instability in your Garden’*

**Key Notes** from the *Fall into Gardening* Educational Event  
held at Qualicum Beach on October 23, 2022

*Approximately eight CVRS members attended the educational event in Qualicum Beach on Sunday, so some Key Points from the four speakers’ presentations might be of interest to those of you who were unable to attend. These will be covered in parts in this and the next newsletter.*

~ Verna Buhler ~



Photo: Gerry Boughan (Dreamstime)

## *Planting Trees for a Drier and Hotter Future*

DOUGLAS JUSTICE, UBC Botanical Garden Assistant Director and Curator



Photo: pacifichorticulture.org

Two contrasting photos served as an introduction.

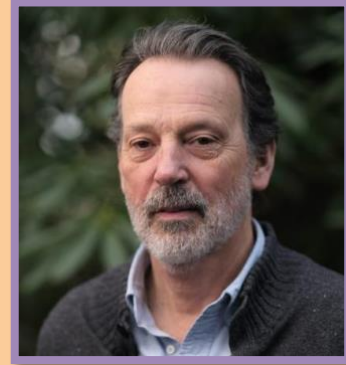
One depicted a street with buildings and concrete and the other, tree-lined with fall colours. **Which would we like to see in the future? What can we do?**

## The future climate for our region that affects our trees:

*“California moves north.*

*Prince Rupert moves south.”*

~ Douglas Justice



- **Trees provide services:**

- Summer Cooling – as much as 5 degrees in tree-lined streets
- Moderate Winter Cold
- Reduce Wind
- Increase Humidity
- Purify Air
- Produce Oxygen
- Sequester Carbon
- Provide Refuge Habitat for Wildlife
- Increase Human Happiness

- **What Trees Need:**

- Soil moisture, drainage, fertility
- Wind to strengthen structure
- Air circulation
- Sunlight/shading
- Adequate root space
- Vertical and horizontal space
- Optimal temperatures
- Absence of pollutants and physical damage (ie. De-icing salt)
- Appropriate *aftercare*

*Choice Matters!!*

*“Right Plant, Right Place”*



## Qualities of Good Trees for the Future

***“Some trees are perfect trees except for. . .”***

Douglas Justice

### ■ Perfect but may become invasiveness by various means

- ***Ailanthus altissima*** (Tree of Heaven) *Human planting, seed, suckering, resprouting*
- ***Quercus robur*** (English Oak) *Beautiful, sturdy; acorns widely distributed by squirrels*
- ***Acer platanoides*** (Norway Maple) *Adaptive, grow fast, live long; considered invasive, strong deep roots overpower other trees, by seed that invade native forests*
- ***Albizia julibrissin*** (Silk Tree, Mimosa) *Beautiful, grow fast; invasive in warm temperatures, many long seed pods, late to leaf out*
- ***Acer pseudoplatanus*** (Planetree/Sycamore Maple) *Vigorous, sturdy, tolerant; extremely large, spread easily by seed*



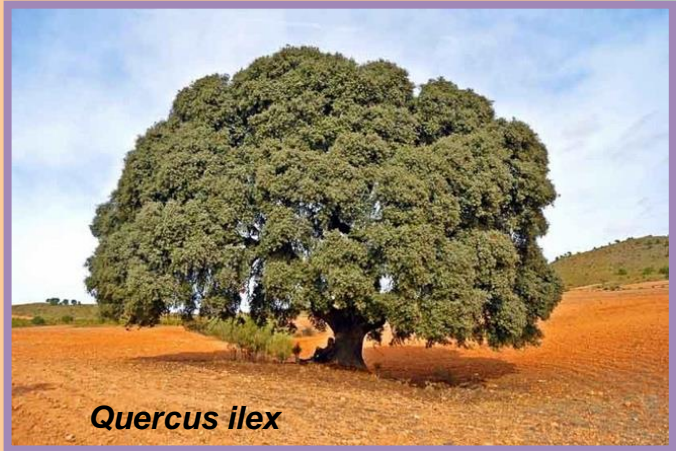
### ■ Perfect but

- ***Acer tegmentosum*** ‘White Tigress’ (White Tigress Snakebark Maple) *Stunning bark, lovely size; require well-drained soil, shelter from wind and scorching sun, a woodland, not a “heat-dome” tree*
- ***Castanea sativa*** (European/Sweet Chestnut) *Adaptive, drought tolerant, edible fruit; require careful placement, extremely large, unpleasant pollen aroma, burred fruit, chestnut blight*
- ***Eucalyptus gunnii*** (Cider gum) *Versatile, reliable, hardy, grow fast, attractive foliage, peeling bark; very large space requirement, messy, short-lived in the cold*
- ***Gleditsia triacanthos*** (Honey Locust) *Graceful, long-lived, tolerant of wind, heat drought, and salt; does not like saturated soil, susceptible to borers and canker, thorns on species*
- ***Cercidiphyllum japonicum*** (Katsura) *Elegant, graceful, year-round interest, colourful and fragrant fall foliage; drought sensitive, requires water*
- ***Arbutus menziesii*** (Pacific Madrone) *Canada’s only broad-leaved evergreen tree, striking bark, drought and wind tolerant; not transplantable, increase in leaf blight due to climate changes, human vandalism*

## ▪ Some trees with promising qualities

Among others,  
Quercus are strong contenders  
Diversity is key  
Research choices carefully

- ***Quercus ilex*** (Holm Oak)  
Magnificent and picturesque; leathery evergreen leaves; shelter and acorns for mammals and birds; drought tolerant once established; virtually disease free

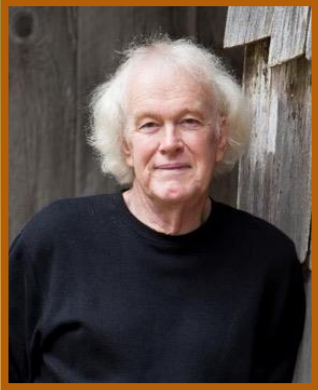


- ***Quercus coccinea*** (Scarlet/Red Oak)  
Fast-growing, handsome; glossy foliage and brilliant autumn colour; tolerant of poor and dry soils
- ***Quercus palustris*** (Pin Oak)  
Fast growing; more pyramidal; brilliant fall colour; suitable to wetland areas

**DIVERSITY is Important!**







## Des Kennedy's

Entertaining and Amusing Presentation

### *Weather or Not*

at the Fall into Gardening Event

Des Kennedy's musings on "Weather or Not" are now posted on the Nanaimo Rhododendron Society website with his gracious permission: <http://nanaimorhodos.ca/des-kennedy-weather-or-not/>. It's under "information" as that is the only location that it fits under the current website design. (Rosina)



## Caroline Jossefson

### *"Gardening with less water – learning from the Garry Oak Ecosystem"*

at the Fall into Gardening Event

The Garry oak ecosystem can serve as a model for sustainable gardening in our area, one that honours our region's cultural history and its biodiversity. Caroline spoke about her experience of gardening with Garry oak ecosystem-associated plants in her small front yard in Nanaimo, and suggested resources for information, seeds, and plants.

To summarize the content of Caroline's presentation would be impossible without her supporting photos. However, the essence of her message is expressed in an **excellent** Zoom presentation of *The Miller Lecture*, which was forwarded to the NIRS by Maureen Denny:

### **This lecture is only available to October 31, 2022**

However, you may find several YouTube videos available on this topic

### **The Miller Lecture - Brooklyn Bridge Park: Lessons in Built Ecology – Zoom Link**

[https://us06web.zoom.us/rec/play/sW3\\_jf6yXPpt3TJCJm0DwGA7Eao3xpx4canwN5V7At-iBEh2\\_RqLdlyLoterDWDNDHd50q4bjRGleJ8.1TNP\\_ltmBM0p7-uX7?continueMode=true&x\\_zm\\_rtaid=z5Qk3twSQ9i2ThDNfTv0DQ.1666731555099.c42a125935ba02802b0ddbe131ee1a0e&x\\_zm\\_rtaid=694](https://us06web.zoom.us/rec/play/sW3_jf6yXPpt3TJCJm0DwGA7Eao3xpx4canwN5V7At-iBEh2_RqLdlyLoterDWDNDHd50q4bjRGleJ8.1TNP_ltmBM0p7-uX7?continueMode=true&x_zm_rtaid=z5Qk3twSQ9i2ThDNfTv0DQ.1666731555099.c42a125935ba02802b0ddbe131ee1a0e&x_zm_rtaid=694)

### ***Bonnie Zand's "Gardening for bees: supporting BC's diverse native bees"***

This very important fourth presentation will be covered in the December Newsletter



# *Rhododendron blackii*



*Rhododendron blackii* growing in the Rutherford Conservatory at RSBG Photo: Verna Buhler

An inquiry about Vireyas, lead me to flip through photos that I had taken at the Rutherford Conservatory at the Rhododendron Species Botanical Garden a number of years ago.

I was excited to spot a photo of the species ***Rhododendron blackii*** in bloom.

At the ARS Fall Conference in Parksville several years ago, I bought a 4-inch pot of a tiny rhododendron with unusual foliage. *I understood it was not hardy but later could not find information about it.*

I faithfully brought it into a sheltered greenhouse for winters and over the years it has grown to be about foot tall. Perhaps one day it will bloom.

~ Verna Buhler

## ***Rhododendron blackii***

Height - to 3m - mostly terrestrial

Leaves - ovate to orbicular - 7.5 x 6.5cm

Flowers - tubular-funnel-shaped, curved - 6.5cm - up to 9 per umbel

Location - Papua New Guinea: Western & Southern Highlands - 2500-3300m

Epithet - after Michael Black, England, who collected in New Guinea



# *Rhododendron* 'Contina'



Most *Rhododendron* enthusiasts know of Steve Hootman, Executive Director and Curator at the Rhododendron Species Botanical Garden in Federal Way, Washington.

He is known as one of the foremost international plant hunters of the late 20<sup>th</sup> and early 21<sup>st</sup> centuries. He is among the most knowledgeable people in the world on the genus *Rhododendron*.



If you have ever visited the RSBG Sales Catalogue, you will have noticed that some plants are identified with an icon as **Steve's Pick**. Although Steve's focus is more on the species, there are several hybrids that bear the favored icon.

***Rhododendron* 'Contina' is one of these.**



***Rhododendron* 'Contina'** is a fantastic hybrid!

The parentage, *R. conccinum* 'Chief Paulina' x *R. augustinii* 'Barto Blue' has resulted in a hybrid with "striking flowers of intense, deep red-purple favouring the purple". When in bloom, in April and May, it is "one of the most commented upon plants in the entire garden." It has darker plum speckling and white stamens.

*Rhododendron* 'Contina' is very hardy, grows upright, and has nice clean foliage

**It can be seen on *Google Earth* when it is blooming!!**



## THE SPECTACULAR COMPANION PLANT for NOVEMBER

### *Cercidiphyllum japonicum*

***Cercidiphyllum japonicum***, commonly known as the Katsura Tree, was the recipient of the prestigious Royal Horticultural Society **Award of Garden Merit** because of its outstanding qualities:

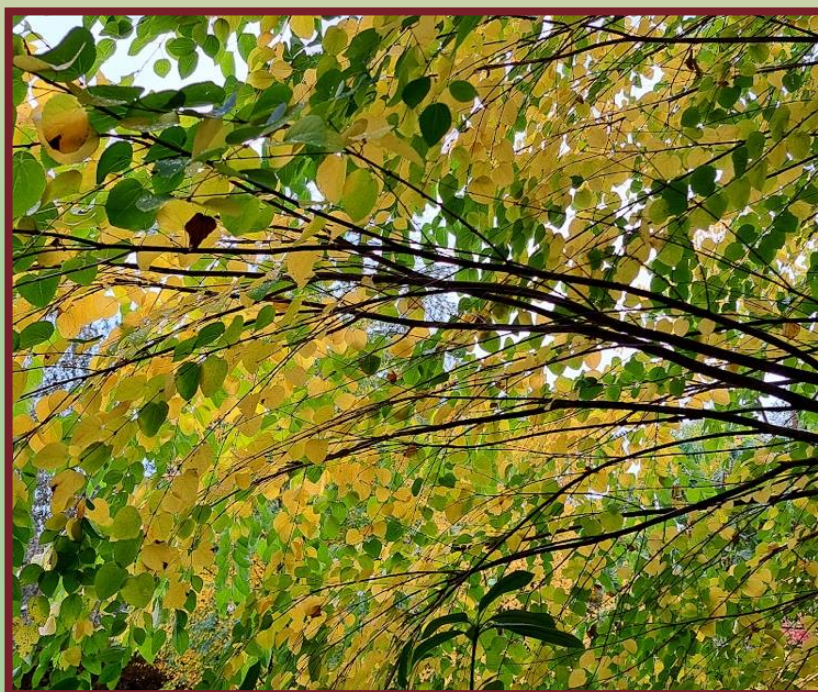
- Elegant and graceful, upright pyramidal when young and rounded with age; 40 – 50ft tall
- Foliage begins reddish purple in spring, turns blueish green in summer, and brilliant shades of gold, orange, and red in fall
- In fall, foliage smells like cinnamon or burnt sugar

**Requires moist, organically rich, well-drained soil**



*Cercidiphyllum japonicum* in the deciduous woodland in a November garden (Photo above)

**Beneath the Katsura Tree as foliage changes to golden hues** (Photo below)





## DIMINUTIVE COMPANION PLANTS for NOVEMBER

### *Saxifraga*



***Saxifraga fortunei* Berry Bright' or 'Magenta'** has vibrant pink clusters of flowers above fabulous mounds of bronze-tinged foliage, blooming brightly in late fall to winter.

It forms semi-evergreen clumps about 10 inches tall and 12 inches wide.

This stunning and brilliant woodland border plant is of the Dan Hinkley Collection

### *Heaths and Heathers*

When people refer to heathers, they're usually talking about one of three types of plant – **Calluna (Scotch Heather)**, **Daboecia (Irish Heath)**, and **Erica (Heath and Winter Heath)**. Most people just refer to all three kinds of plants as heathers. However, when you are planning your garden, you will want to know the difference. How disappointing if you planted a heather for winter flowers, but instead found you had chosen a summer-bloomer!

#### **In short:**

- ***Erica* / Heath** have both summer and winter flowering types. They have the finest texture and feel soft and fluffy.
- ***Daboecia* / Irish Heather** (duh-bee'-shuh) bloom from spring through fall with large flowers, on dark green foliage and tolerate part shade.
- ***Calluna* / Scotch Heather** are late-summer and fall blooming. They offer the most variety in foliage colour and plant shape and the opportunity to create stunning combinations





Heathers are low-maintenance, deer-resistant; most are winter-hardy; they withstand winds and tolerate low-water conditions once mature; they look great in containers. With planning, you can have blooms year-round on evergreen plants with great foliage.

They simply require decent drainage and average sunlight.

A variety of *Calluna* brighten the November border along the pathway. Some with bright magenta flowers and lime-green new growth, and others with their brilliant complex foliage.

*Calluna vulgaris* 'Zoe' has fire-red foliage in spring and maintains a brilliant foliage year round.





# “Christmas Cactus”

## Blooming Moods

Have you ever wondered why your Christmas Cactus has decided to bloom so early? If you have several Christmas Cacti, you may find that they bloom on seemingly random schedules, despite your plans to have a bright and bold display at specific times of the year, such as Christmas. Two of my Christmas cacti are blooming two months ahead of my plans for it. Is it because they were outside all summer?

This illustration explains a misnomer of mine. My “Christmas Cactus” is actually *Schlumbergera truncata* that blooms around Thanksgiving. Note that the foliage is different from the other two varieties in the photos on the right. *Schlumbergera bridgesii* is the variety that will bloom at Christmas, and *Rhipsalidopsis gaertnerii* will bloom around Easter.





# Greig Rhododendron Species Garden

## At Milner Gardens and Woodlands

### Update

The Greig Rhododendron Species Garden Advisory Committee met at Milner Gardens on Wednesday afternoon, October 26, 2022.

John Deniseger recently accepted the role of Chair of the Committee after Tony decided to step down after leading the group since planning first began. Much has been developed since that time, and John lead a brief review of these events.

This garden is a partnership between Vancouver Island University's Milner Gardens & Woodland and the five Vancouver Island chapters of the American Rhododendron Society in Qualicum Beach (Mount Arrowsmith), Nanaimo, Courtenay (North Island), Cowichan Valley, and Victoria, as an education project to show the diversity of the genus *Rhododendron*. The garden is designed in six global geographic areas: Szechuan, Yunnan, Himalayas, Northeast Asia, Europe and North America.

The Grieg Rhododendron Species Garden was named in honour of Ted and Mary Greig, pioneers in their field, who created many of the early hybrids found in Milner Gardens and Woodlands. Funding of the Greig Rhododendron species Garde has been provided by Vancouver Island University and the five Vancouver Island Chapters of the American Rhododendron Society along with financial contributions from private donors and grants from the American Rhododendron Society. The entire project from original design and hardscape to the clearing and planting is the work of the volunteers and staff from the Rhododendron Societies and the Milner Gardens and Woodland community.

Tony and Geoff provided a Financial Report which showed that the organization is in a position to proceed with Phase 2 of the Project. The fund is in a good position at this time largely due to a very generous donation from a private donor. The efforts to build an Endowment Fund have also proceeded well and the fund is steadily growing. The Advisory expresses gratitude for these and all donations directed towards these projects.

Phase 1 requires some funding for completion and maintenance. Several plants that died will be replaced and some more plants will be planted. Several secondary paths will be added. Interpretive signage is not yet complete. A concept and title that will be used for the educational signage is '*Living Library of Wild Rhododendron Species*'. The signs are composed of aluminum with a laminated surface.

A Bench Dedication Fund is also in place. For Information about this program, contact Milner Gardens and Woodland.

Phase 2 is the development of a Big-Leaf and Tree Rhododendron Section on the slope toward the ocean. A viewing platform will allow guests to initially view the garden from above; eventually a staircase and path will enable viewing from alongside and below where lovely indumentum of many of the majestic rhododendrons may be seen.

Surveying the area, identifying boundaries, and landscape design will begin shortly. Plant acquisition is set to begin. In the selection of plants, Endangered and At Risk Rhododendrons are priorities. A number of individuals, including Alan Campbell from the CVRS, are identifying these plants. The objective is to purchase as large plants as possible at reasonable prices soon, so that plants have an opportunity to grow larger by the time planting on the slope begins.

A very large new Shade House has been erected in a meadow near the Greig Rhododendron Garden. Volunteers from MARS and NRS and Milner Staff constructed it from found materials of a greenhouse once used by VIU. It may be used to *heel-in* some newly-purchased plants for a few seasons.

Following the meeting, members of the Advisory Committee toured the garden to witness the progress in Phase 1 and to view the Milner property of the newly-designated site for Phase 2. The Shade House was also part of the tour.

**There are opportunities for the Cowichan Valley Rhododendron Society to contribute to the important projects at Milner Gardens. Financial support is always greatly appreciated. Funds can be directed to any of the ongoing fund raising efforts: Education and Interpretive Programs; General Maintenance; Construction of Phase 2; Endowment Funds**

**Geoff Ball**  
**Director of Milner Gardens and Woodlands**

is planning

**A Special OPEN GARDEN Event**  
**for all Members of the**  
**District 1 Rhododendron Society**  
**in**  
**Late April or Early May 2023**

Watch for a Notice bout this event



# *Nature's November Beauty in CVRS Members' Gardens*







## PHOTO CONTEST

*Remember to save and enlarge  
some of your best Rhododendron Photos  
for the Christmas Party Photo contest*

*See rules on page 5*

## Renew Your CVRS Membership

For the last two years, due to the restrictions imposed by the COVID pandemic guidelines and resultingly fewer activities being offered, the CVRS membership fees were reduced. However, the American Rhododendron Society fees still needed to be covered, so the CVRS subsidized the fees to the ARS for these two years.

This year, the fees for new or renewal are being restored to regular levels.

### FEES FOR 2022 – 2023:

Adult Membership: \$40  
Associate Membership: \$10

David Annis, CVRS Membership Chair, will welcome your payments at the monthly Wednesday meetings, where you may pay by cheque or exact change. You may choose to:

- **Mail a Cheque:** David Annis, 5974 Tower Place, Duncan, BC, V9L 0E1
- **E-Transfer auto deposit:** email to: [cowichanvalleyrhododendron@gmail.com](mailto:cowichanvalleyrhododendron@gmail.com)
- **Drop off your fee:** David's front door (near the Hospital) Call 250-748-1338 first!

*Thank-you,*

*David*



**2022 – 2023**  
**Calendar of Events**

Contact CVRS:

[cowichanvalleyrhododendron@gmail.com](mailto:cowichanvalleyrhododendron@gmail.com)

**Wednesday, November 2, 2022 7:30 pm**  
**CVRS November Meeting**  
**Colin Tamboline:** *Lilium for Rhododendron Lovers*

**Wednesday, November 9, 2022 7:30pm**  
**Mt. Arrowsmith Rhododendron Society**  
**Annual General Meeting**



---

**NATIONAL AND INTERNATIONAL AMERICAN RHODODENDRON SOCIETY  
EVENTS**

**2023:**  
**ARS Fall Western Regional Conference, Florence, Oregon. Dates to be determined.**

**2023:**  
**ARS Annual Convention, Atlanta, Georgia. Joint ARS/ASA meeting. Dates to be determined.**

## USEFUL LINKS

Cowichan Rhododendron Society:

[cowichanrhodos.ca/](http://cowichanrhodos.ca/)

Victoria Rhododendron Society:

[victoriarhodo.ca/index.html](http://victoriarhodo.ca/index.html)

Mount Arrowsmith Rhododendron Society:

[marsrhodos.ca/](http://marsrhodos.ca/)

North Island Rhododendron Society:

[nirsrhodos.ca/ws/](http://nirsrhodos.ca/ws/)

The American Rhododendron Society:

[rhododendron.org/](http://rhododendron.org/)

Nanaimo Rhododendron Society:

[nanaimorhodos.ca](http://nanaimorhodos.ca)

Rhododendron Species Botanical Garden:

[rhodygarden.org](http://rhodygarden.org)

Nanoose Garden Club:

[nanoosegardenclub.ca/](http://nanoosegardenclub.ca/)

Linda Gilkeson:

[lindagilkeson.ca/](http://lindagilkeson.ca/)

Vancouver Island Rock and Garden Society:

[virags.com](http://virags.com)

Linda Chalker-Scott:

<https://puyallup.wsu.edu/lcs/>

Steve Henning:

[rhodyman.net](http://rhodyman.net)

Rhododendron, Camellia, Magnolia

<https://www.rhodogroup-rhs.org/>



**Cowichan Valley Rhododendron Society**

A Chapter of the American  
Rhododendron Society P.O. Box 904  
Duncan, British Columbia V9L 3Y2

<http://cowichanrhodos.ca>

### 2022-2023 Executive

President: Barrie Agar  
Vice-President: Dorothy Kennedy  
Treasurer: Diane Allen  
Secretary: Mary Pike  
Director-at-Large: Wendy Willson  
Director-at-Large: Candice Feeney  
Director-at-Large: Sandy Campbell  
Director-at-Large: Ali Morris  
Membership Chairperson: David Annis

### Convenors

Sunshine: Vacant  
Tea: Judeen Hendrickson  
Raffle: Hilda Gerrits  
Program Planning: The Executive Team  
Fundraising: The Executive Team  
CVRS Garden Tours: Candice Feeney  
CVRS Bus Tours: TBA  
Library: Verna Buhler  
Newsletter: Verna Buhler